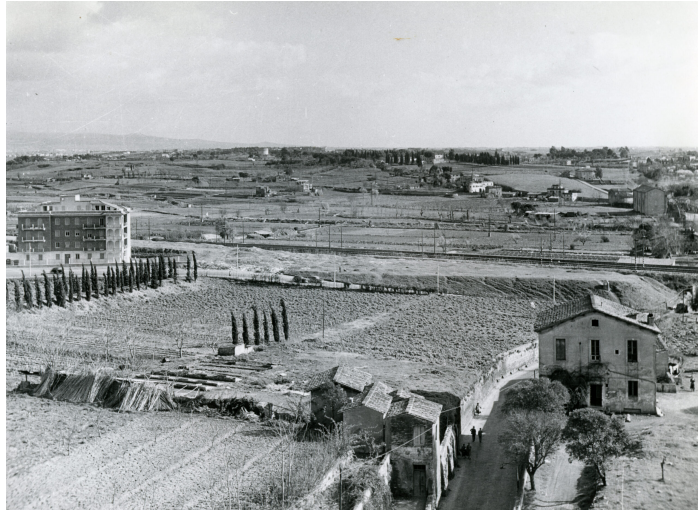


The part of Via Appia Antica seen from Porta S. Sebastiano



Subject

The part of Via Appia Antica seen from Porta S. Sebastiano towards Castelli Romani. In the background we see the Tomb of Cecilia Metella and the complex of S. Callisto before the construction of the viaduct of the Cilicia way.

Accession number 1206.1_000_000_049

B/W photo. On the back are the number 42 and the acronym P.R. written in pencil.

Cederna archive, file 1206.1 (picture Appia Antica).

1955-1956

Placement

[Appia Antica Archeological Park – Antonio Cederna archive](#)

Credits

Antonio Cederna archive (PAAA)